

Lost/Stolen Equipment

If your equipment is lost or stolen you must contact Cellhire immediately at **support@cellhire.com** or call **+1.214.355.5200** (follow the prompts).

All calls made are the responsibility of the customer until the line is suspended by the network.

For a complete users manual please visit:

www.cellhire.com/support/equipment-manuals

24 Hour Technical Support

Cellhire's Support Center is available 24 hours a day, 7 days week:

Within the US: **1 877 244 7242**

Outside the US: **+1 214 355 5200**

support@cellhire.com

www.cellhire.com/support

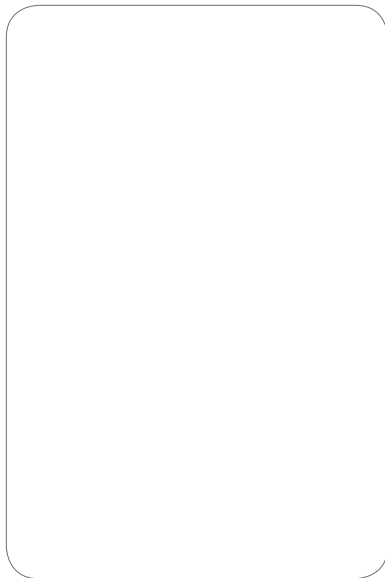
▶ International Country Codes

Australia	61
Austria	43
Belgium	32
Brazil	55
Canada	1
China.....	86
Finland	358
France	33
Germany	49
Greece	30
Hong Kong.....	852
Italy	39
Japan	81
Netherlands.....	31
Norway.....	47
Portugal.....	351
Russia	7
South Africa.....	27
Spain.....	34
Sweden	46
Switzerland.....	41
Taiwan	886
UK.....	44
USA.....	1

Nokia6100 SIM Card

Your Mobile Number & User Instructions

Your Mobile Number

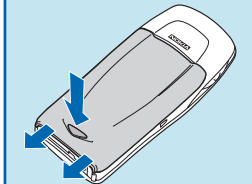


Your Cellhire SIM card is activated & ready for insertion into your mobile device.

STEP 1:

Slide the release button to unlock and remove the back cover of the phone. Next, remove the battery.

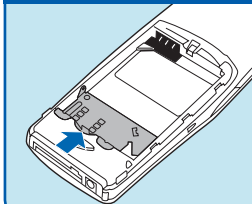
Remove back cover & battery.



STEP 2:

Carefully unlatch the metal SIM card holder and swing it open.

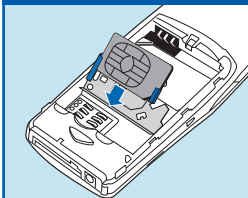
Open the SIM card holder.



STEP 3:

Insert the SIM card into the holder, beveled corner first, with the gold contacts face up (away from the phone).

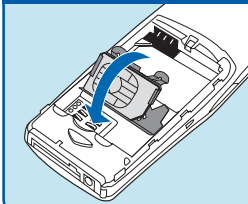
Insert the SIM card.



STEP 4:

Swing the SIM card holder closed. Gently press the holder closed until it clicks into place.

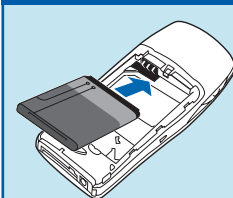
Close the SIM card holder.



STEP 5:

Insert the battery so that the golden contact areas match up. The battery label should be facing toward the phone.

Insert the battery.



STEP 6:

Finally, slide the back cover toward the top of the phone to lock the cover into place.

Replace the back cover.

